

The Fast Track to Generate and Evaluate Your Prospects Deep and Fairways Shelf Exploration and Exploitation Potentials

High Island – Galveston

Offshore Texas, Gulf of Mexico

This multi-client project covers an active, highly prolific offshore shelf area with abundance of infrastructures. Utilizing integrated geopressure, stratigraphy, structure-paleoenvironment and related well logs, it delineates the *optimum* Strat-Geopressure Fairways. Over 370 key deep wells in a total of 226 blocks were analyzed, interpreted, mapped, and appraised. Pore pressure in deep reservoirs and their seal quality were predicted in time (Lent. Jeff to Bul. 1) and depth slices (to depth 24,000’).

By incorporating the above mentioned outcome with established producing horizons, potential-bypass pays and good quality reservoirs we have produced an *essential fast track tool for generating and assessing a prospect, lead and play concept*.

Benefits:

For prospecting assessment:

1. Quickly identifies under explored areas and blocks with deeper potentials
2. Evaluates the reservoir quality and the geopressure gradient at any prospective structural closure
3. Straightforwardly correlates the leads and prospects to producing and potential pay Fairways
4. Sheds light on trapping-driving mechanisms, reserve managements and seismic amplitude characteristics

For economic and drilling appraisal:

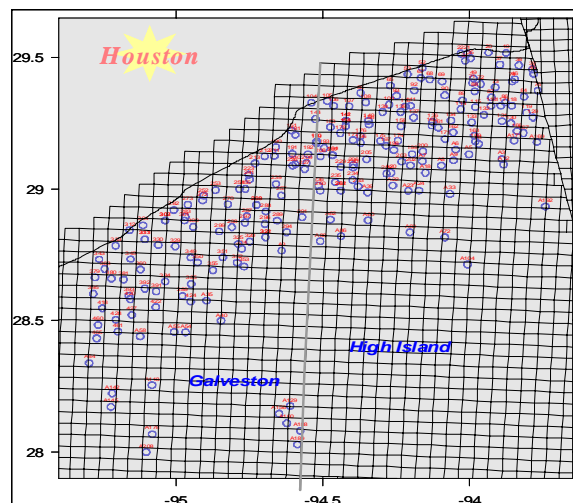
1. Establishes the depth to the intermediate casing in your proposed location (+/- 1/3 well cost)
2. Predicts pore pressure profile (ppg MWE) in time and in depth (24000’) for new wildcats
3. Defines casing seats and mud programs for your prospect’s AFE

Multi-client project by:

G.A.S.

Geopressure

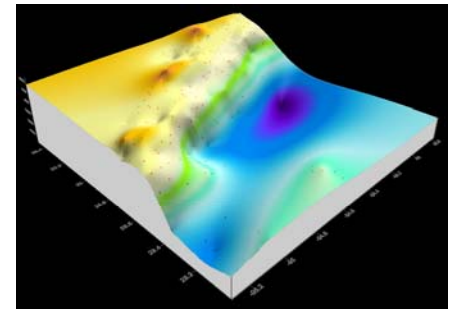
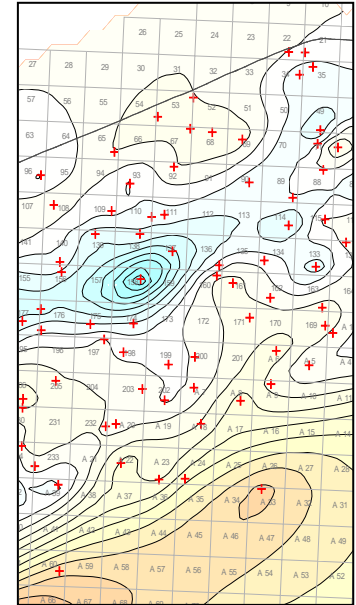
Analysis Services LLC



Deliverables:

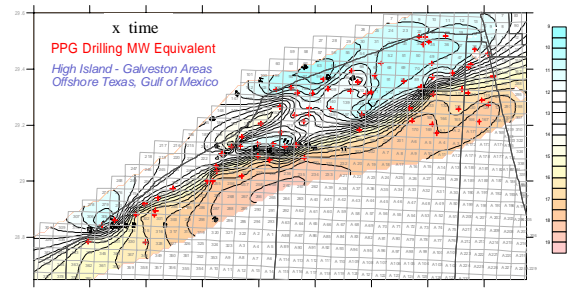
Four hard copy volumes:

Volume 1	Summary comprehensive report explains the concepts, process, results and how to use the maps and analysis for prospective and drilling evaluations
Volume 2	<ul style="list-style-type: none"> • Maps Of Under-Explored Blocks • Top of Geopressure map (TOG) • 26 Strat-Geopressure Fairway Maps Of Production, <i>Bypass Pay</i> And Potential Reservoirs (U. Oligocene – Pliocene) • 16 Regional Strat-Geopressure Maps • 22 Pore Pressure Prediction Maps (Ppg Mwe) In Geological Time and Depth Slices to 24,000'. • 31 Structure, Isopach And Paleoenvironment Maps (Lent. Jeff. – Bul.1)
Volume 3 Volume 4	Interpreted 370 Key Wells In High Island (V.3) And Galveston (V.4). Each Well's Display Shows Stratigraphic Units, Producing Sand, Bypass Pay, Potential Reservoirs And TOG.



Digital data on CD's:

Raw data	All the stratigraphy and geopressure data in ASCII and Excel ,work station ready
Index Map	PDF with links to all the wells
All Maps	Tiff and PDF formats for larger printing



Advisory consultation:

Power Point presentation and support documents on how to use this study project for generating and evaluating a Prospect, Lead and Play concept in this area.

For more information please contact:

Selim Shaker 281-660-9461

email:

geopressureinc@verizon.net

website:

www.geopressureanalysis.com

