

***The Fast Track to Generate and Evaluate Prospects***  
**Strat-Geopressure Fairways, Under-Explored Deeper Potentials,  
Bypass Pay Zones and AVO Assessments**

**High Island – Galveston**

*Offshore Texas, Gulf of Mexico*

This multi-client project covers an active, highly prolific offshore shelf area with an abundance of infrastructures. The project delineates the optimum Fairways within each exploration trend, overcomes the uncertainty of the AVO classes, and designates the under-explored and untapped deeper potentials. Pore pressure in reservoirs and their associated seals were predicted in time and depth slices (depth 24000’).

Over 400 key deep wells in a total of 226 Blocks were studied, analyzed, and mapped. Integrated pressure gradients, stratigraphy, paleoenvironments, regional structure, and velocity behavior are the main inputs of this project.

By incorporating the outcome of the aforementioned multifaceted objectives with established producing horizons, potential-bypass pays and good quality reservoirs, we have produced an *essential fast track tool for generating and assessing low risk prospect, lead and play concepts*.

**Benefits:**

***For prospecting assessment:***

1. Quickly identifies under explored areas and blocks with deeper potentials
2. Recognizes the bypass and abandoned potential pay zones due to drilling challenging
3. Evaluates the reservoir quality and the geopressure gradient at any prospective structural closure
4. Assesses AVO and seismic amplitude characteristics at any stratigraphic level
5. Straightforwardly correlates the leads and prospects to producing and potential pay Fairways
6. Sheds light on trapping-driving mechanisms and reserve managements

***For economic and drilling appraisal:***

1. Establishes the depth to the intermediate casing in your proposed location (+/- 1/3 of well cost)
2. Predicts pore pressure profile (ppg MWE) in time and in depth for new wildcats
3. Defines casing seats and mud programs for your prospect’s AFE

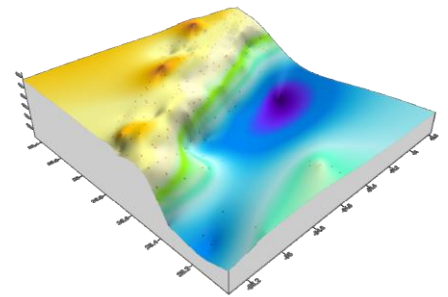
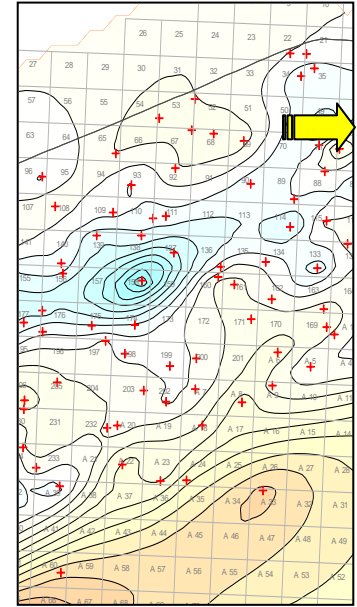
**Multi-client project by:**

**Geopressure Analysis Services, Inc. (G.A.S.)**

**Deliverables:**

*Four hard copy volumes:*

Volume 1	Summary comprehensive report explains the concepts, process, results and how to use the maps and analysis for prospective and drilling evaluations
Volume 2	<ul style="list-style-type: none"> <li>• Maps of Under-Explored Blocks</li> <li>• Top of Geopressure map (TOG)</li> <li>• 16 Regional Strat-Geopressure Maps</li> <li>• 26 Strat-Geopressure Fairway Maps of Production, Bypass Pay and Potential Reservoirs (U. Oligocene – Pliocene)</li> <li>• 22 Pore Pressure Prediction Maps (ppg Mwe) in Geological Time and Depth Slices to 24,000'</li> <li>• 31 Structure, Isopach and Paleoenvironment Maps (Lent. Jeff. – Bul.1)</li> </ul>
Volume 3 Volume 4	Over 400 Interpreted Key Wells in High Island (V.3) and Galveston (V.4). Each Well's Display Shows Stratigraphic Units, Producing Sand, Bypass Pay, LRP, Potential Reservoirs and TOG.

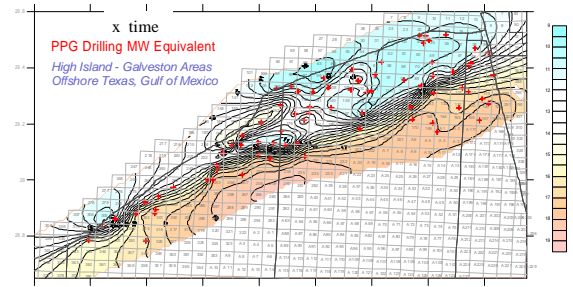


*Digital data on CD's:*

Raw data	All the stratigraphy and geopressure data in ASCII and Excel ,work station ready
All Maps / logs	Interactive PDF with links to all the wells
All Maps	Tiff and PDF formats for larger printing scale

*Advisory consultation:*

Power Point presentation and support documents on how to use this study project for generating and evaluating a Prospect, Lead and Play concept in this area.



For more information please contact:

Selim Shaker 281-660-9461

**email:**

shaker@geo-pressure.com

**website:**

[www.geopressureanalysis.com](http://www.geopressureanalysis.com)

